



Morecambe Offshore Windfarm: Generation Assets Environmental Statement

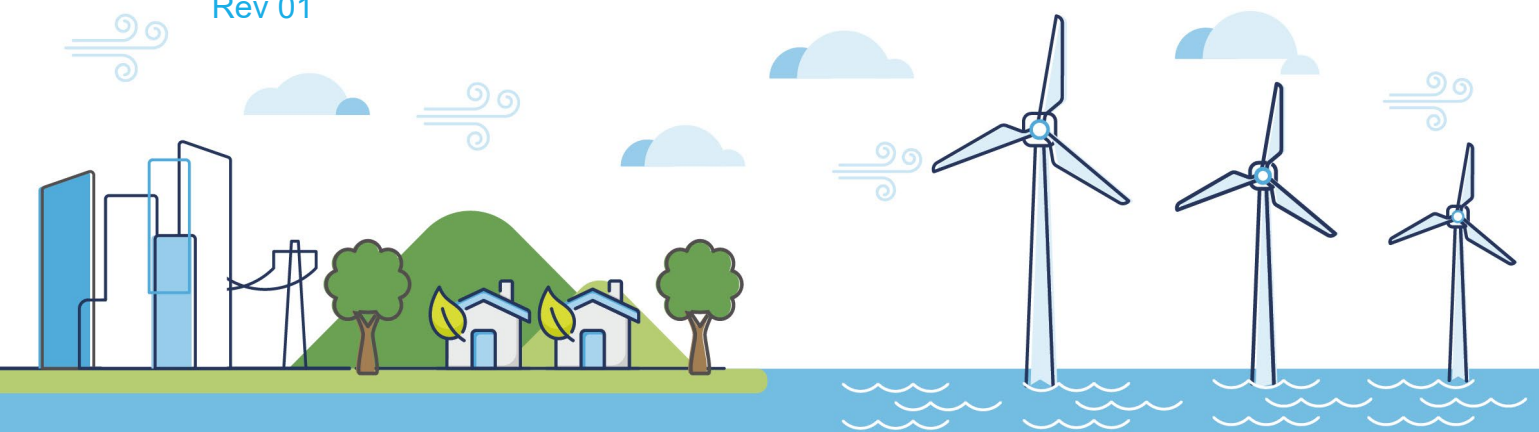
Volume 5

Chapter 18 SLVIA Figures (Part 34 of 34)

PINS Document Reference: 5.3.18.34

APFP Regulation: 5(2)(a)

Rev 01



Document History

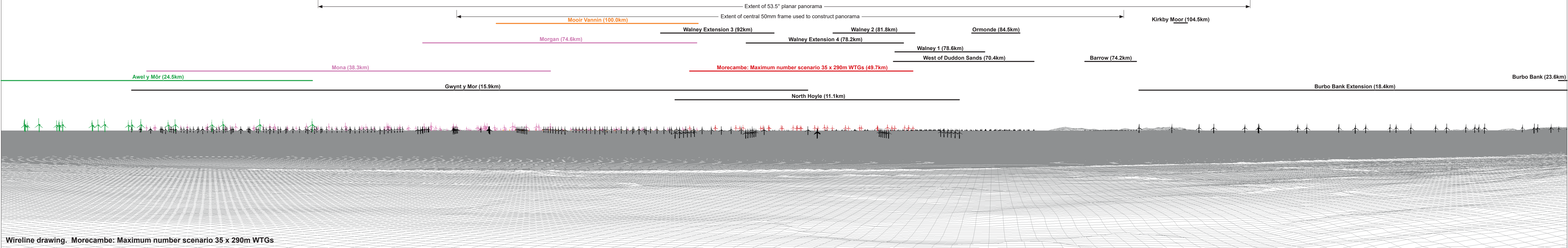
Doc No	MOR001-FLO-CON-ENV-FIG-1180	Rev	01
Alt Doc No	PC1165-RHD-ES-XX-DG-Z-0018		
Document Status	Approved for Use	Doc Date	May 2024
PINS Doc Ref	5.3.18.34	APFP Ref	5(2)(a)

Rev	Date	Doc Status	Originator	Reviewer	Approver	Modifications
01	May 2024	Approved for Use	Royal HaskoningDHV	Morecambe Offshore Windfarm Ltd	Morecambe Offshore Windfarm Ltd	n/a



Baseline photograph

This image provides landscape and visual context only

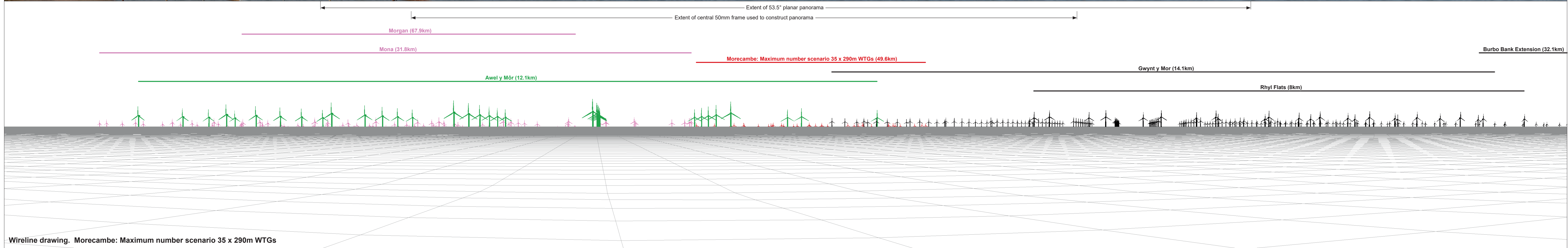


Wireline drawing. Morecambe: Maximum number scenario 35 x 290m WTGs

OS reference:	305945 E 380394 N	Horizontal field of view:	90° (cylindrical projection)	Camera:	Canon EOS 6D Mark II
Eye level:	150.95 m AOD	Principal distance:	522 mm	Lens:	EF50mm f/1.4 USM
Direction of view:	348°			Camera height:	1.5 m AGL
Nearest turbine:	49.7 km			Date and time:	19/07/2022, 09:58

Figure: 18:67
Viewpoint 20: Graig Fawr, Clwydian Range

© Crown copyright and database rights (2024) Ordnance Survey 0100031673.



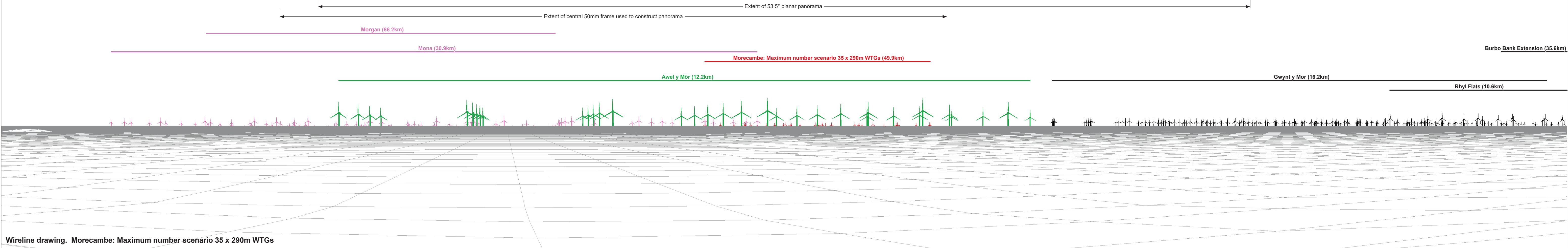
OS reference:	284098 E 381165 N	Horizontal field of view:	90° (cylindrical projection)	Camera:	Canon EOS 6D Mark II
Eye level:	9.17 m AOD	Principal distance:	522 mm	Lens:	EF50mm f/1.4 USM
Direction of view:	11°			Camera height:	1.5 m AGL
Nearest turbine:	49.6 km			Date and time:	18/07/2022, 12:57

Figure: 18:68
Viewpoint 21: Rhos Point
 © Crown copyright and database rights (2024) Ordnance Survey 0100031673.



Baseline photograph

This image provides landscape and visual context only



OS reference: 279118 E 382137 N	Horizontal field of view: 90° (cylindrical projection)	Camera: Canon EOS 6D Mark II
Eye level: 8.6 m AOD	Principal distance: 522 mm	Lens: EF50mm f/1.4 USM
Direction of view: 16°		Camera height: 1.5 m AGL
Nearest turbine: 49.9 km		Date and time: 18/07/2022, 15:05

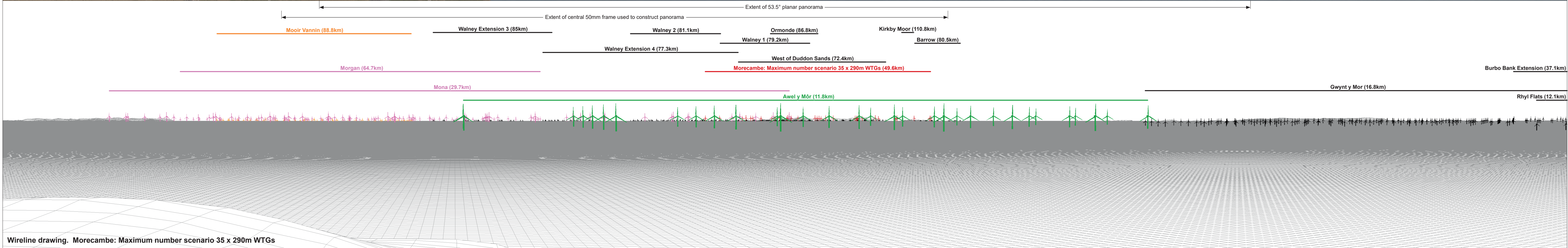
Figure: 18:69
Viewpoint 22: Llandudno Promenade

© Crown copyright and database rights (2024) Ordnance Survey 0100031673.



Baseline photograph

This image provides landscape and visual context only



Wireline drawing. Morecambe: Maximum number scenario 35 x 290m WTGs

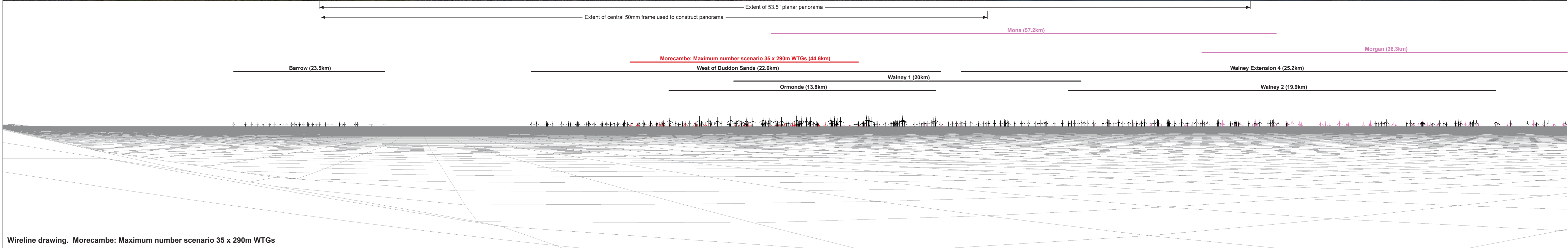
OS reference:	276659 E 383399 N	Horizontal field of view:	90° (cylindrical projection)	Camera:	Canon EOS 6D Mark II
Eye level:	201.14 m AOD	Principal distance:	522 mm	Lens:	EF50mm f/1.4 USM
Direction of view:	19°			Camera height:	1.5 m AGL
Nearest turbine:	49.6 km			Date and time:	18/07/2022, 11:29

Figure: 18:70
Viewpoint 23: Great Orme's Head



Baseline photograph

This image provides landscape and visual context only



Wireline drawing. Morecambe: Maximum number scenario 35 x 290m WTGs

OS reference: 312084 E 481109 N
 Eye level: 8.85 m AOD
 Direction of view: 201°
 Nearest turbine: 44.6 km

Horizontal field of view: 90° (cylindrical projection)
 Principal distance: 522 mm

Camera: Canon EOS 6D
 Lens: EF50mm f/1.4 USM
 Camera height: 1.5 m AGL
 Date and time: 10/08/2022, 07:12

Figure: 18:71
 Viewpoint 24: Silcroft Beach